

2 & 3 BHK SUPER DELUX FLATS



WINSOME BUILDERS

fit into the luxurious life you and your loved once always wanted

→ above
- slope



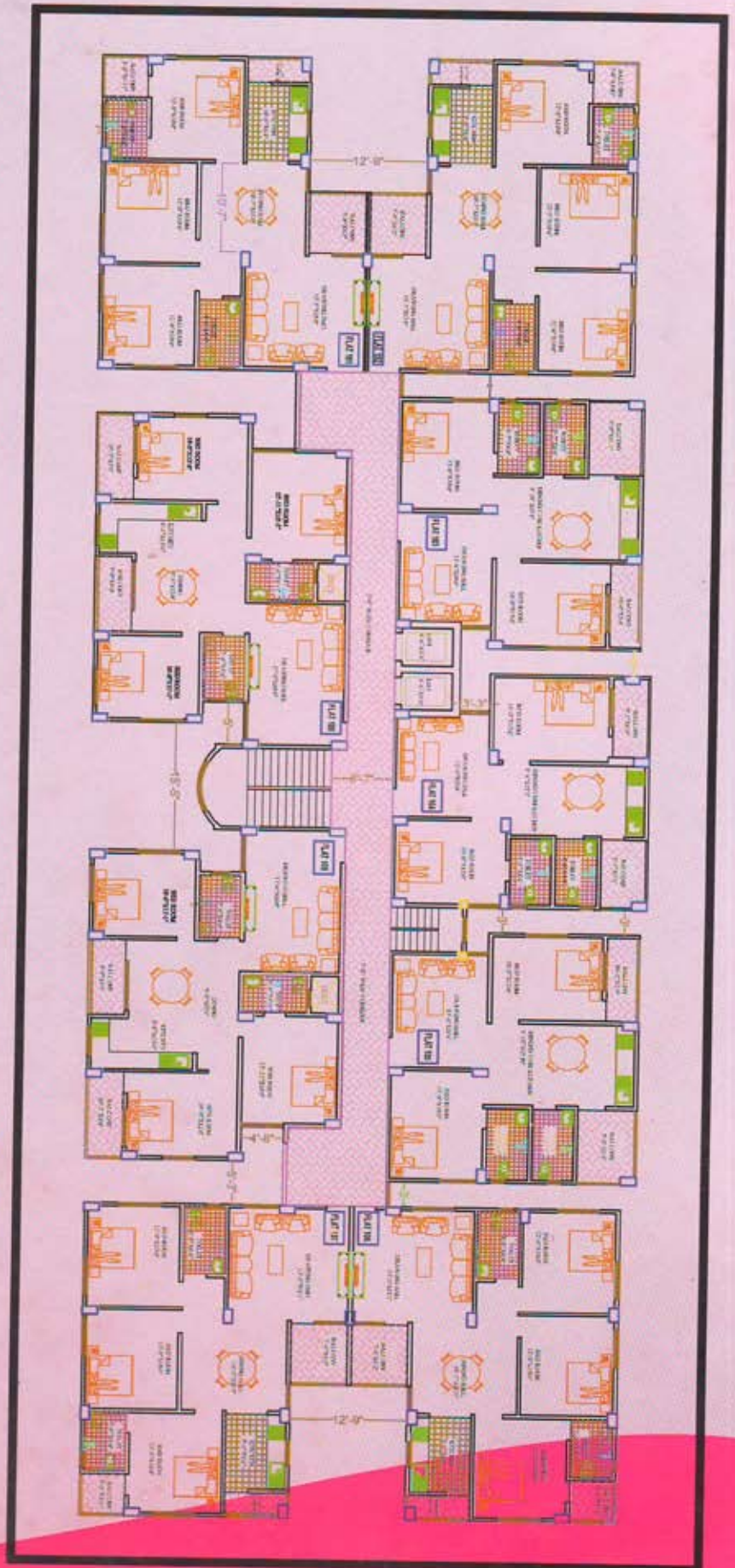
A Project By Winsome Builders

Winsome Regency

AREA STATEMENT	
FLAT NO.	SALEABLE AREA
#101	1287 SFT
#102	1287 SFT
#103	1020 SFT
#104	928 SFT
#105	1020 SFT
#106	1287 SFT
#107	1287 SFT
#108	1306 SFT
#109	1306 SFT



Loan by all leading Banks i.e. SBI, LIC HOUSING, AXIS, HDFC BANK etc.



The Facilities and Amenities

STRUCTURE :

Earth Quake Resistant RCC frame structure

INTERNAL WALL :

Internal Wall finished with Branded Wall Putty with Branded primer

EXTERNAL WALL :

External Wall finished with Branded Weather Coat Paint

DOORS & WINDOW :

Branded Designer Main Door with Synthetic Enamel Paint

Internal flush Doors With Enamel Paint

Sal Wood Door Frames

Aluminium Sliding Windows with External Grills

INTERNAL FLOORING :

Branded Vitrified Floor Tiles of 2 X 2

BALCONIES :

Branded Anti Skid Floor Tiles

Provision for Washing Machine

KITCHEN :

Granite/ Green Marble Top Kitchen platform with S. S. Sink

Branded Glaze Wall Tiles upto 2' dado height

Provision for Aqua Guard and Exhaust Fan/Chimney

BATHROOMS :

Hindware/Pariware/Equivalent make white Sanitary Bathware

Jaquar/Equivalent Hot & Cold Mixture unit for each bathrooms

Branded Anti skid floor Tiles

Provision for Geyser and Exhaust Fan in all bathrooms

Water Proof Doors

Concealed Plumbing with premium quality pipes

Provision for Washing Machine

ELECTRICALS :

Concealed branded Electrical Copper Wiring

A.C. Points in each bedroom

Adequate electrical points in all rooms and kitchen

Branded electrical switches

Provision for Cable and Telephone

AMENITIES :

Fire Fighting System as per norm

24 Hrs. water supply through Deep Borewell

Branded Silent DG set for Power Back up

2 Branded Passenger lift

Power back Up for Lift Water Pump, Common Areas

Intercom facilities

2BHK
↓



Coming Soon Winsome Regency Phase-II

OUR PROJECTS



WINSOME PARK I



WINSOME PARK II



WINSOME PARK III



MALVIYA MANSION

Office : **Adi Shakti Market , Near Gyanodaya Gurukul School,
Gola Road (Bailey Road) Danapur Cantt. Patna - 801503**

Contact No : 0612-6567097 ; 9386312241/42 & 44

E-mail id : winsomebuilder@gmail.com

Web site : www.winsomebuilders.in

SITE : WINSOME MARG, VIJAY SINGH YADAV PATH, NEAR RADIANT INTERNATIONAL SCHOOL,
SAGUNA KHAGAU ROAD, PATNA-801503